



ADISUTJIPTO INTERNATIONAL AIRPORT (WARJ / JOG) QUICKVIEW VER 1.0

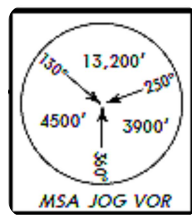


**NOT FOR REAL NAVIGATION
FOR SIMULATION USE ONLY**



Adisutjipto International Airport (WARJ / JOG)

YOGYA DIRECTOR (APP) : 123.400
 ADI TOWER : 122.400
 ADI TOWER (SECONDARY) : 118.100



Apt Elev 350'

SQUAWK :

- 4600 - 4677

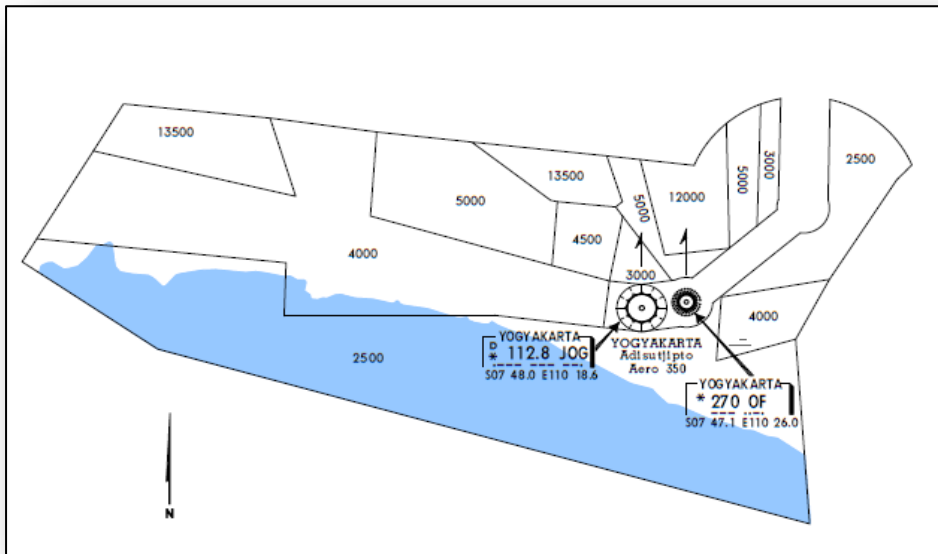
STANDARD INSTRUMENT DEPARTURE

SID	RUNWAY 09	RUNWAY 27	INITIAL CLIMB
GEPAK	1A	1B	AFTER TAKE OFF RUNWAY 09, EXPEDITE <u>LEFT</u> TURN
YOGYA	1A	1B	

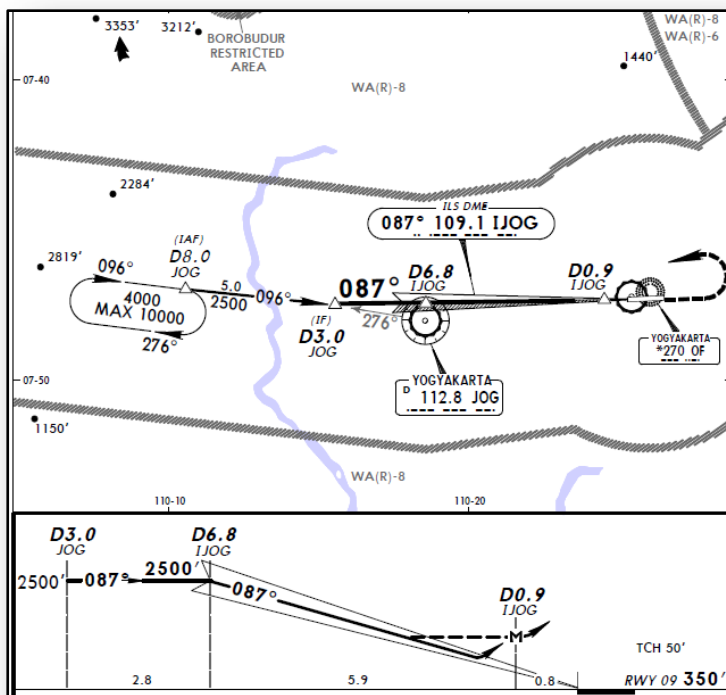
STANDARD ARRIVAL

SID	RUNWAY 09	RUNWAY 27
GEPAK	1B	1B
PURWO	1B	1B

YOGYAKARTA MINIMUM VECTOR ALTITUDE CLEARANCE



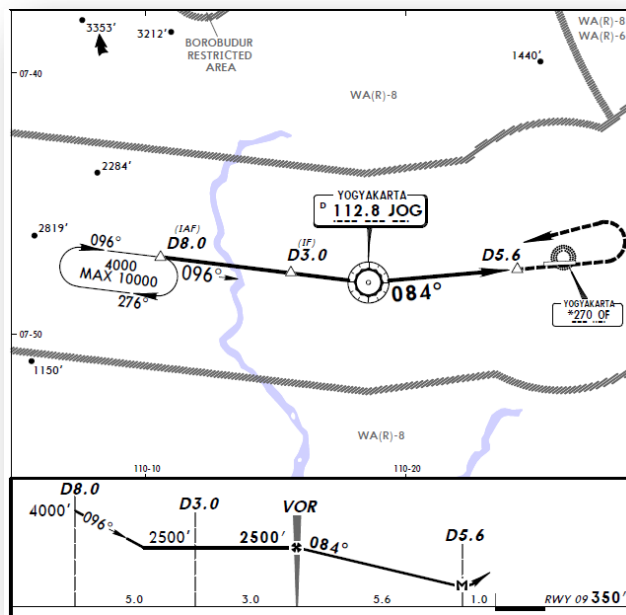
ILS RUNWAY 09



ILS FREQ (IJOG) : 109.100
 FINAL COURSE : 087
 VOR FREQ (JOG) : 112.800
 NDB FREQ (OF) : 270
 RWY 09 ELEVATION : 350'

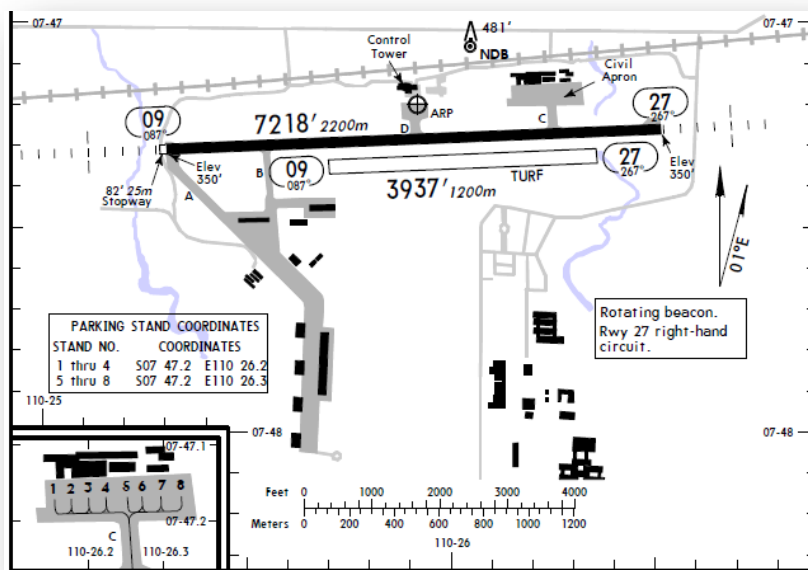
ADISUTJIPTO INTERNATIONAL AIRPORT (WARJ / JOG) QUICKVIEW

VOR DME RUNWAY 09



VOR FREQ (JOG) : 122.800
 FINAL COURSE : 084
 NDB FREQ (OF) : 270
 RWY 09 ELEVATION : 350'

PARKING SPOT



VERSION HISTORY

VERSION	DATE	NOTES
1.0	OKTOBER, 2012	AIRAC 1111

PREPARED BY ;

Suardi Handoko

SUNARDI HANDOKO
 UJUNG PANDANG FIR CHIEF

Winaldi Wijaya

WINALDI WIJAYA P
 UJUNG PANDANG ASST FIR CHIEF