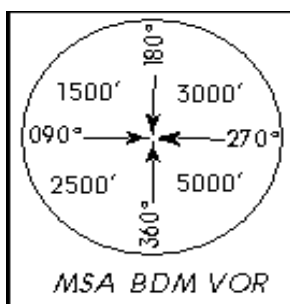
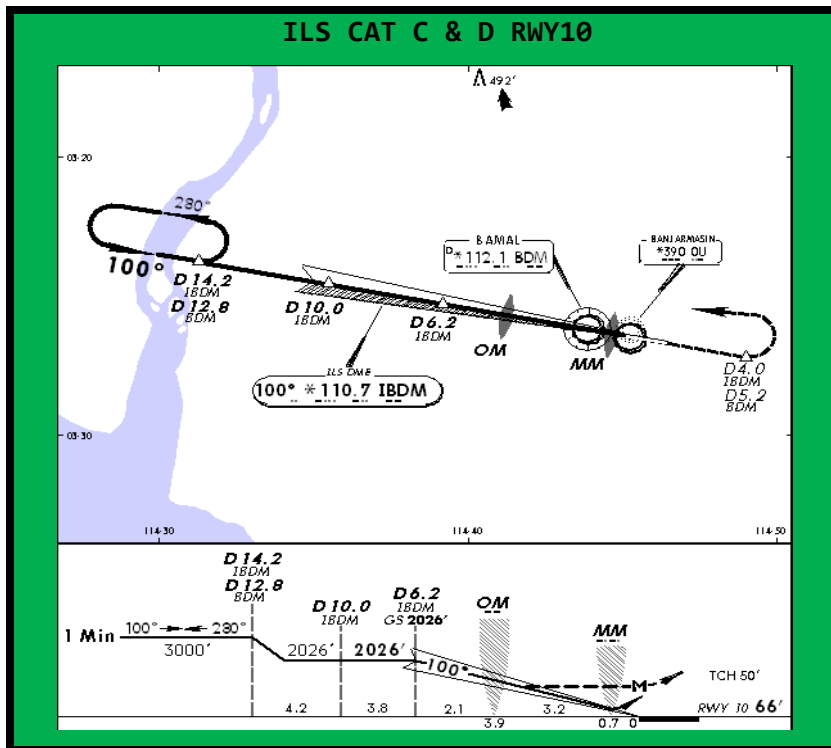
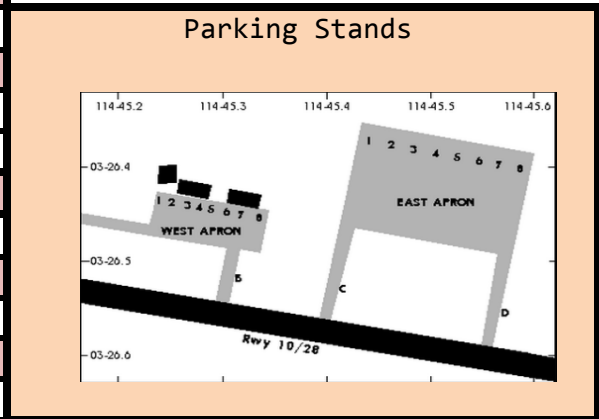




Banjarmasin Syamsudin WAOO/BDJ (March 2012)

SID	RWY10	RWY28
AYANI	1A	1B
DUNIA	1A	1B
KOLOT	1A	1B
PALANG (FK)	1A	1B
STAR	RWY10	RWY28
AYANI	1B	*
BISOM	1B	*
DUNIA	1B	*
GURNI	1B	*
IAKPI	1B	*
NOMAD	1B	*
PALANG (FK)	1B	*



Banjarsamin Tower **FREQ:118.400**
 Banjarsamin Approach **FREQ:126.500**

Squawks:
 Domestic: 5720-5737
 International: 5050-5057

ILS FREQ RWY 10: 110.700