



SEPINGGAN AIRPORT (WALL / BPN) QUICKVIEW

VER 1.0



**NOT FOR REAL NAVIGATION
FOR SIMULATION USE ONLY**

Sepinggan Airport (WALL / BPN)

BALIKPAPAN APPROACH (APP) : 120.400 SEPINGGAN TOWER : 118.100 AIRPORT ELEVATION : 12'	SQUAWK : 45XX
---	----------------------



STANDARD INSTRUMENT DEPARTURE

SID	RUNWAY 25	RUNWAY 07	
SEPINGGAN	1	3	
SEPINGGAN	2	4	
SEPINGGAN	5	6	

STANDARD ARRIVAL

STAR RWY 25 & RWY 07
ALPHA
BRAVO
CHARLIE
DELTA
ECHO

ILS RUNWAY 25



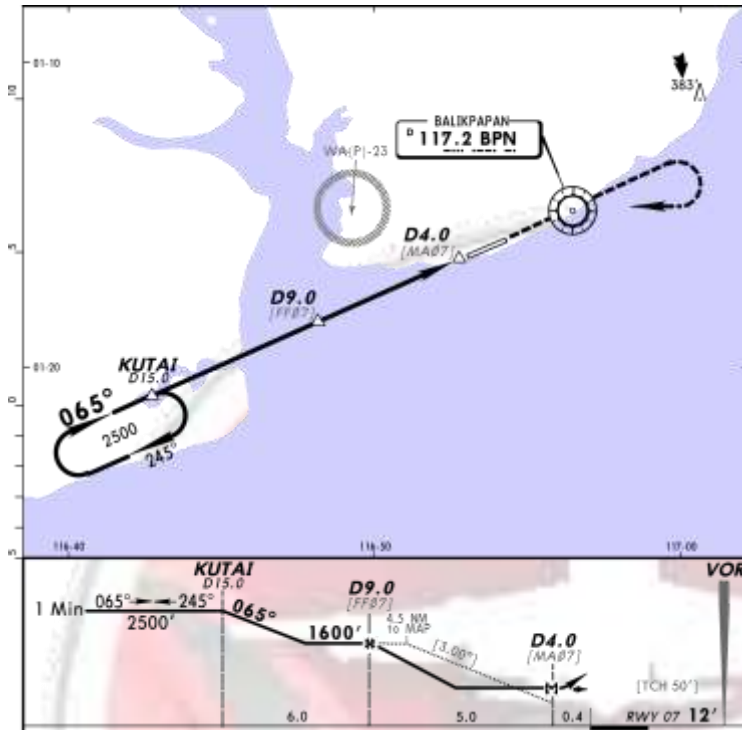
ILS FREQ (IBPN) : 110.900
 FINAL COURSE : 247

 VOR FREQ (BPN) : 117.200

 RWY 25 ELEVATION : 12'

MISSED APPROACH :
 CLIMB OUT VIA BPN VOR R-247 TO 3000' THEN LEFT TURN PROCEED TO BPN VOR AND HOLD. CONTACT BALIKPAPAN APPROACH

VOR DME RUNWAY 07



FINAL COURSE : 065
 VOR FREQ (BPN) : 117.200
 RWY 07 ELEVATION : 12'

MISSED APPROACH :
 CLIMB 2500' AND TURN
 RIGHT TO BPN VOR TO
 INTERCEPT OUTBOUND BPN
 VOR R-245 AND PROCEED
 TO HOLDING FIX

VERSION HISTORY

VERSION	DATE	NOTES
1.0	SEPTEMBER, 2012	INITIAL RELEASE

PREPARED BY ;

Sunardi Handoko

SUNARDI HANDOKO
 UJUNG PANDANG FIR CHIEF

Winaldi Wijaya P

WINALDI WIJAYA P
 UJUNG PANDANG ASST FIR CHIEF